

Views of Ontarians on potential policy priorities for the Government of Ontario

Canadian Taxpayers Federation Ontario Survey Summary

submitted by Nanos to the Canadian Taxpayers Federation, February 2017
(Submission 2017-986)





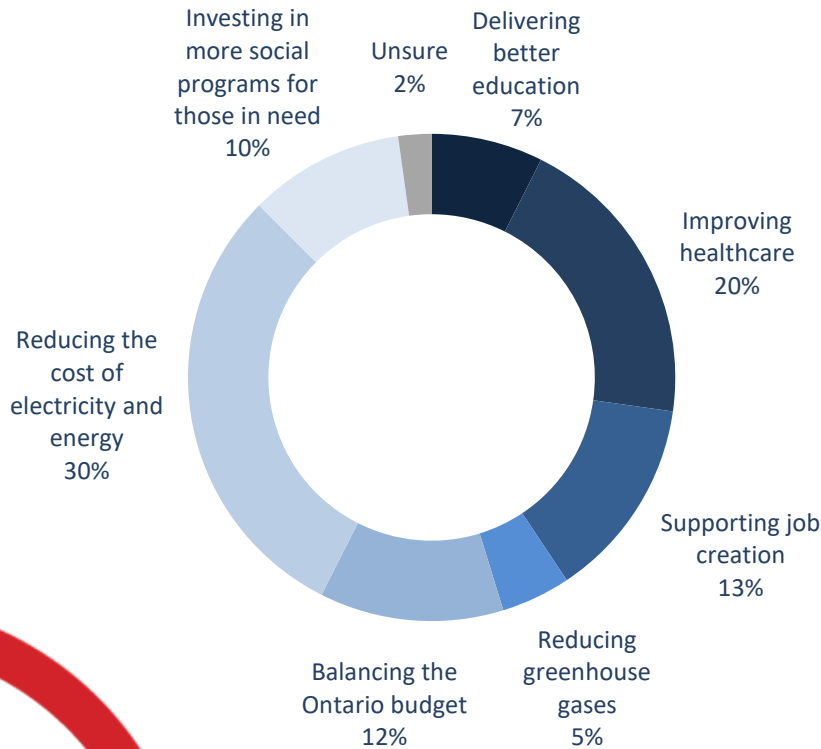
Majority of Ontarians oppose or somewhat oppose cap and trade policy

Asked their opinion on a series of possible priorities, three out of ten Ontarians believe that reducing the cost of electricity and energy should be the top policy priority for the provincial government compared to five per cent who believe reducing greenhouse gas should be the priority. The majority of Ontarians oppose or somewhat oppose the cap and trade policy and believe that the true cost to the average Ontario household will be more than \$13 per month. Ontario residents have mixed views on whether they believe the new cap and trade policy will reduce climate change, on what their ideal political party would propose, and on the likeliness of supporting a political party that was committed to no cap and trade policy and no carbon tax. Most Ontarians would be less likely to support a political party that proposed a direct new carbon tax.

- **Three out of ten residents of Ontario believe reducing the cost of electricity and energy should be the top policy priority for the provincial government** – Asked what the top policy priority should be for the government of Ontario, 30% of Ontarians responded with reducing the cost of electricity and energy. This was followed by improving healthcare (20%), supporting job creation (13%), balancing the Ontario budget (12%), investing in more social programs for those in need (ten per cent), delivering better education (seven per cent) and reducing greenhouse gases (five per cent). Two per cent are unsure.
- **More than six out of ten Ontarians oppose or somewhat oppose the new cap and trade policy** – More than six out of ten Ontarians oppose (51%) or somewhat oppose (ten per cent) the new cap-and-trade policy limiting the amount of tonnes of greenhouse gas businesses and institutions can emit and making them buy permits or allowances through government run auctions or from other companies if they exceed these limits. More than one out of three Ontarians support (21%) or somewhat support (15%) this. Four per cent are unsure.
- **Nearly seven out of ten Ontario residents believe that for this new policy, the true cost to the average Ontario household will be more than \$13 per month** – Sixty-eight per cent of Ontario residents think that for this policy, the true cost to the average Ontario household will be more than \$13 per month, while six per cent believe it will be \$13 per month and nine per cent believe it will be less than \$13 per month. Seventeen per cent are unsure.

Top policy priority for Government of Ontario

Source: Nanos Research, RDD dual frame telephone random survey, February 3rd and 7th, 2017, n=500, accurate to 4.4 percentage points plus or minus, 19 times out of 20.



***Note: Charts may not add up to 100 due to rounding**

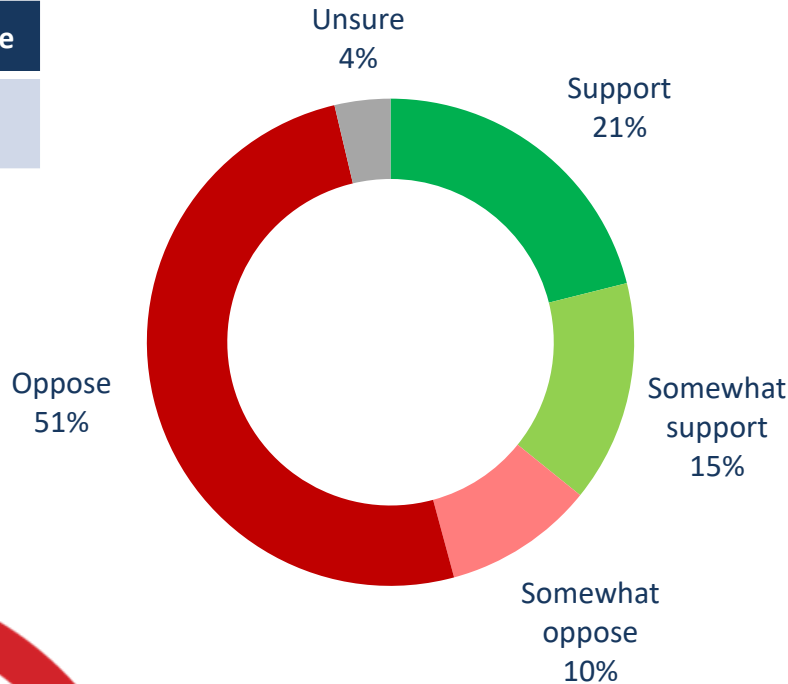
Subgroups	Reducing the cost of electricity and energy
GTA (n=254)	26.4%
Rest of Ontario (n=246)	33.6%
Male (n=259)	32.8%
Female (n=241)	27.4%
18 to 29 (n=74)	30.8%
30 to 39 (n=70)	33.7%
40 to 49 (n=110)	26.6%
50 to 59 (n=109)	29.6%
60 plus (n=137)	30.2%
Liberal (n=134)	20.9%
PC (n=203)	37.6%
NDP (n=91)	32.0%
Green (n=22)	28.3%
Other (n=4)	10.7%
Undecided (n=46)	20.4%

QUESTION – What should be the top policy priority for the Government of Ontario?
[RANDOMIZE]

Support for Ontario cap-and-trade tax policy

Source: Nanos Research, RDD dual frame telephone random survey, February 3rd and 7th, 2017, n=500, accurate to 4.4 percentage points plus or minus, 19 times out of 20.

Net Score
-24.7



***Note: Charts may not add up to 100 due to rounding**

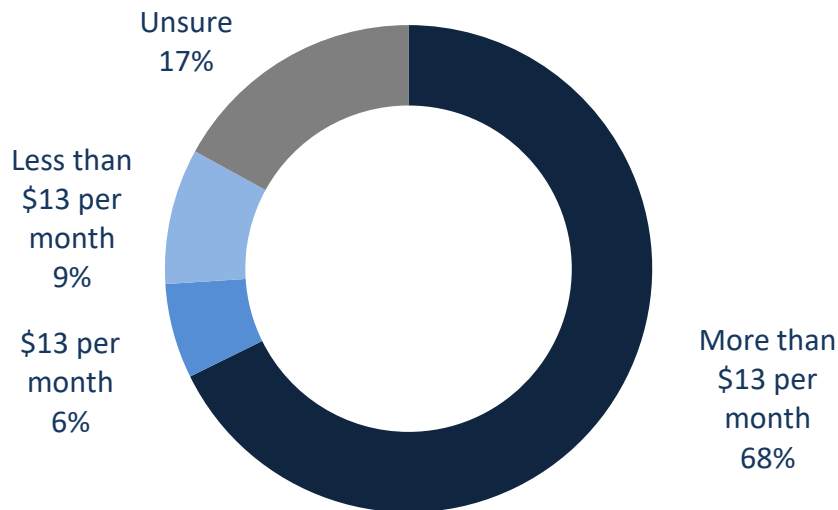
Subgroups	Oppose/ Somewhat oppose
GTA (n=254)	56.0%
Rest of Ontario (n=246)	64.8%
Male (n=259)	62.6%
Female (n=241)	58.4%
18 to 29 (n=74)	58.7%
30 to 39 (n=70)	66.9%
40 to 49 (n=110)	59.6%
50 to 59 (n=109)	61.6%
60 plus (n=137)	57.0%
Liberal (n=134)	42.4%
PC (n=203)	71.6%
NDP (n=91)	64.5%
Green (n=22)	70.2%
Other (n=4)	100.0%
Undecided (n=46)	63.9%

QUESTION – As you may have heard, the Government of Ontario introduced a cap-and-trade tax policy in Ontario on January 1, 2017. This policy limits how many tonnes of greenhouse gas businesses and institutions can emit and if they exceed those limits they have to buy permits or allowances through government run auctions or from other companies. It is estimated that the new policy will cost the average Ontario household about \$13 more per month to fuel a car and heat a home in 2017.

Do you support, somewhat support, somewhat oppose or oppose this policy?

Estimation of policy cost for average Ontario household

Source: Nanos Research, RDD dual frame telephone random survey, February 3rd and 7th, 2017, n=500, accurate to 4.4 percentage points plus or minus, 19 times out of 20.



*Note: Charts may not add up to 100 due to rounding

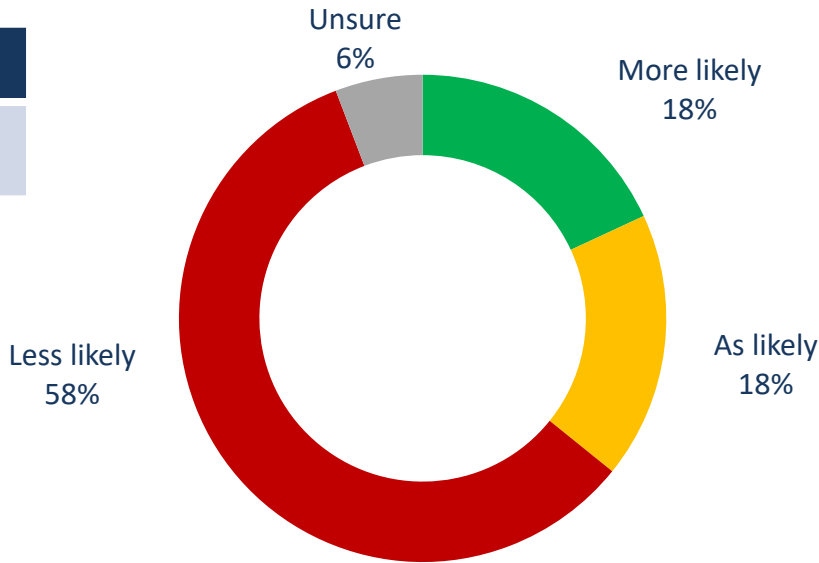
Subgroups	More than \$13 per month
GTA (n=254)	67.8%
Rest of Ontario (n=246)	67.7%
Male (n=259)	71.5%
Female (n=241)	64.1%
18 to 29 (n=74)	65.1%
30 to 39 (n=70)	77.7%
40 to 49 (n=110)	69.8%
50 to 59 (n=109)	58.2%
60 plus (n=137)	67.6%
Liberal (n=134)	64.4%
PC (n=203)	72.1%
NDP (n=91)	63.8%
Green (n=22)	52.2%
Other (n=4)	100.0%
Undecided (n=46)	69.0%

QUESTION – For this new policy do you think the true cost to the average Ontario household will be more than \$13 per month, \$13 per month or less than \$13 per month?

Effect on political support: direct tax on carbon

Source: Nanos Research, RDD dual frame telephone random survey, February 3rd and 7th, 2017, n=500, accurate to 4.4 percentage points plus or minus, 19 times out of 20.

Net Score
-40.3



*Note: Charts may not add up to 100 due to rounding

Subgroups	Less likely
GTA (n=254)	52.9%
Rest of Ontario (n=246)	63.7%
Male (n=259)	63.6%
Female (n=241)	53.4%
18 to 29 (n=74)	50.0%
30 to 39 (n=70)	61.0%
40 to 49 (n=110)	65.0%
50 to 59 (n=109)	60.4%
60 plus (n=137)	55.9%
Liberal (n=134)	52.4%
PC (n=203)	63.1%
NDP (n=91)	61.6%
Green (n=22)	31.4%
Other (n=4)	52.3%
Undecided (n=46)	61.5%

QUESTION – Are you more likely to support, less likely to support, or would your support not change if a party proposed [ROTATE]

A new direct tax on carbon energy like gasoline and home heating fuel to encourage the reduction of greenhouse gases

Confidential



Methodology

Methodology

Nanos conducted an RDD dual frame (land- and cell-lines) telephone random survey of 500 residents of Ontario, 18 years of age or older, between February 3rd and 7th, 2017 as part of an omnibus survey. Participants were randomly recruited by telephone using live agents. The results were statistically checked and weighted by age and gender using the latest Census information and the sample is geographically stratified to be representative of Ontario.

Individuals were randomly called using random digit dialling with a maximum of five call backs.

The margin of error for a random survey of 500 residents of Ontario is ± 4.4 percentage points, 19 times out of 20.

The research was commissioned by the Canadian Taxpayers Federation.

Note: Charts may not add up to 100 due to rounding.

About Nanos

Nanos is one of North America's most trusted research and strategy organizations. Our team of professionals is regularly called upon by senior executives to deliver superior intelligence and market advantage whether it be helping to chart a path forward, managing a reputation or brand risk or understanding the trends that drive success. Services range from traditional telephone surveys, through to elite in-depth interviews, online research and focus groups. Nanos clients range from Fortune 500 companies through to leading advocacy groups interested in understanding and shaping the public landscape. Whether it is understanding your brand or reputation, customer needs and satisfaction, engaging employees or testing new ads or products, Nanos provides insight you can trust.



View our brochure

Nanos Research

North America Toll-free

1.888.737.5505

info@nanosresearch.com

Technical Note

Element	Description
Organization who commissioned the research	Canadian Taxpayers Federation.
Final Sample Size	500 Randomly selected individuals.
Margin of Error	±4.4 percentage points, 19 times out of 20.
Mode of Survey	RDD dual frame (land- and cell-lines) telephone omnibus survey
Sampling Method Base	The sample included both land- and cell-lines RDD (Random Digit Dialed) across Canada.
Demographics (Captured)	Ontario; Men and Women; 18 years and older. Six digit postal code was used to validate geography.
Fieldwork/Validation	Live interviews with live supervision to validate work as per the MRIA Code of Conduct
Number of Calls	Maximum of five call backs.
Time of Calls	Individuals were called between 12-5:30 pm and 6:30-9:30pm local time for the respondent.
Field Dates	February 3 rd to 7 th , 2017.
Language of Survey	The survey was conducted in both English and French.

Element	Description
Weighting of Data	The results were weighted by age and gender using the latest Census information (2014) and the sample is geographically stratified to ensure a distribution across all regions of Ontario. See tables for full weighting disclosure
Screening	Screening ensured potential respondents did not work in the market research industry, in the advertising industry, in the media or a political party prior to administering the survey to ensure the integrity of the data.
Excluded Demographics	Individuals younger than 18 years old; individuals without land or cell lines could not participate.
Stratification	By age and gender using the latest Census information (2014) and the sample is geographically stratified to be representative of Ontario.
Estimated Response Rate	9 percent, consistent with industry norms.
Question Order	Question order in the preceding report reflects the order in which they appeared in the original questionnaire.
Question Content	This was module seven of an omnibus survey. The previous modules related to top provincial issues of concern, vote consideration, preferred premiers, political leadership qualities, and municipal governments.
Question Wording	The questions in the preceding report are written exactly as they were asked to individuals.
Survey Company	Nanos Research
Contact	Contact Nanos Research for more information or with any concerns or questions. http://www.nanosresearch.com Telephone:(613) 234-4666 ext. Email: info@nanosresearch.com.



Tabulations

Confidential



2017-986 – CTF – Ontario Survey - STAT SHEET

			Region		Gender		Age					Vote Profile									
			Ontario		Rest of		Male		Female		18 to 29	30 to 39	40 to 49	50 to 59	60 plus	Liberal	PC	NDP	Green	Other	Undecided
			2017-01	GTA	Ontario																
Question - What should	Total	Unwgt N	500	254	246	259	241	74	70	110	109	137	134	203	91	22	4	46			
be the top policy		Wgt N	500	246	254	245	255	99	89	107	87	118	138	213	84	20	4	41			
priority for the	Reducing the cost of	%	30.0	26.4	33.6	32.8	27.4	30.8	33.7	26.6	29.6	30.2	20.9	37.6	32.0	28.3	10.7	20.4			
Government of	electricity and energy																				
Ontario? [RANDOMIZE]	Improving healthcare	%	19.8	20.2	19.4	18.9	20.7	19.7	12.1	23.0	23.4	20.3	27.7	15.6	16.5	14.7	.0	26.5			
	Supporting job creation	%	13.4	16.6	10.2	14.0	12.7	14.2	13.8	9.5	14.2	15.4	17.7	11.7	11.0	7.8	.0	16.7			
	Balancing the Ontario	%	12.2	11.6	12.7	16.1	8.5	9.8	11.5	16.8	13.2	9.8	5.6	18.3	11.0	.0	70.4	5.7			
	budget																				
	Investing in more social	%	10.3	11.4	9.3	5.3	15.1	7.6	19.9	7.5	7.4	10.2	13.1	5.2	16.2	19.3	18.9	10.4			
	programs for those in																				
	need																				
	Delivering better	%	7.4	7.4	7.4	6.8	7.9	13.9	5.6	7.3	6.0	4.4	6.2	6.1	9.0	19.7	.0	9.0			
	education																				
	Reducing greenhouse	%	4.6	5.4	3.9	4.4	4.9	2.5	.7	6.0	5.7	7.3	7.4	3.5	.9	8.8	.0	7.4			
	gases																				
	Unsure	%	2.2	.9	3.4	1.6	2.8	1.5	2.7	3.3	.6	2.5	1.3	2.1	3.4	1.3	.0	3.9			

Nanos conducted an RDD dual frame (land- and cell- lines) random telephone survey of 500 residents of Ontario, 18 years of age or older, between February 3rd and 7th, 2017. The margin of error for a random survey of 500 residents of Ontario is ±4.4 percentage points, 19 times out of 20.

www.nanosresearch.com



2017-986 – CTF – Ontario Survey - STAT SHEET

			Region		Gender		Age					Vote Profile						
			Ontario 2017-		Rest of													
			01	GTA	Ontario	Male	Female	18 to 29	30 to 39	40 to 49	50 to 59	60 plus	Liberal	PC	NDP	Green	Other	Undecided
Question - As you may have heard, the Government of Ontario introduced a cap-and-trade tax policy in Ontario on January 1, 2017. This policy limits how many tonnes of greenhouse gas businesses and institutions can emit and if they exceed those limits they have to buy permits or allowances through government run auctions or from other companies. It is estimated that the new policy will cost the average Ontario household about \$13 more per month to fuel a car and heat a home in 2017. Do you support, somewhat support, somewhat oppose or oppose this policy?	Total	Unwgt	500	254	246	259	241	74	70	110	109	137	134	203	91	22	4	46
		N																
		Wgt N	500	246	254	245	255	99	89	107	87	118	138	213	84	20	4	41
	Support	%	21.1	23.1	19.2	19.6	22.7	24.4	18.0	22.8	16.2	23.0	35.7	13.2	15.5	38.5	.0	18.2
	Somewhat support	%	14.7	17.3	12.1	16.6	12.8	12.1	12.6	16.0	19.2	13.8	19.7	12.0	16.1	9.3	.0	12.5
	Somewhat oppose	%	10.0	8.8	11.1	6.9	12.9	15.9	11.1	10.0	9.5	4.5	8.5	8.0	15.6	14.1	.0	12.4
	Oppose	%	50.5	47.2	53.7	55.7	45.5	42.8	55.8	49.6	52.1	52.5	33.9	63.6	48.9	21.3	100.0	51.5
Unsure	%	3.7	3.6	3.8	1.2	6.1	4.7	2.5	1.6	3.0	6.3	2.2	3.1	4.0	16.7	.0	5.3	

Nanos conducted an RDD dual frame (land- and cell- lines) random telephone survey of 500 residents of Ontario, 18 years of age or older, between February 3rd and 7th, 2017. The margin of error for a random survey of 500 residents of Ontario is ±4.4 percentage points, 19 times out of 20.

www.nanosresearch.com



2017-986 – CTF – Ontario Survey - STAT SHEET

			Region		Gender		Age					Vote Profile						
			Ontario		Rest of													
			2017-01	GTA	Ontario	Male	Female	18 to 29	30 to 39	40 to 49	50 to 59	60 plus	Liberal	PC	NDP	Green	Other	Undecided
Question - For this new	Total	Unwgt N	500	254	246	259	241	74	70	110	109	137	134	203	91	22	4	46
policy do you think the		Wgt N	500	246	254	245	255	99	89	107	87	118	138	213	84	20	4	41
true cost to the average	More than \$13 per	%	67.7	67.8	67.7	71.5	64.1	65.1	77.7	69.8	58.2	67.6	64.4	72.1	63.8	52.2	100.0	69.0
Ontario household will	month																	
be more than \$13 per	\$13 per month	%	6.3	6.3	6.3	6.7	5.9	7.1	5.1	6.4	9.8	4.0	8.7	5.2	3.1	7.5	.0	10.6
month, \$13 per month																		
or less than \$13 per	Less than \$13 per	%	9.0	10.4	7.6	9.3	8.6	7.4	6.9	13.1	6.8	9.7	9.3	6.4	18.0	.0	.0	8.2
month?	month																	
	Unsure	%	17.0	15.4	18.5	12.4	21.3	20.4	10.2	10.7	25.2	18.7	17.6	16.3	15.2	40.3	.0	12.2

Nanos conducted an RDD dual frame (land- and cell- lines) random telephone survey of 500 residents of Ontario, 18 years of age or older, between February 3rd and 7th, 2017. The margin of error for a random survey of 500 residents of Ontario is ±4.4 percentage points, 19 times out of 20.

www.nanosresearch.com



2017-986 – CTF – Ontario Survey - STAT SHEET

Are you more likely to support, less likely to support, or would your support not change if a party proposed [ROTATE]

			Region			Gender		Age					Vote Profile					
			Ontario 2017-		Rest of	Male	Female	18 to 29	30 to 39	40 to 49	50 to 59	60 plus	Liberal	PC	NDP	Green	Other	Undecided
			01	GTA	Ontario													
Question - A direct new	Total	Unwgt N	500	254	246	259	241	74	70	110	109	137	134	203	91	22	4	46
tax on carbon energy like		Wgt N	500	246	254	245	255	99	89	107	87	118	138	213	84	20	4	41
gasoline and home	More likely	%	18.1	18.2	18.0	21.9	14.4	17.0	13.6	19.4	16.8	22.1	15.9	16.7	20.3	25.6	47.7	22.0
heating fuel to encourage	Less likely	%	58.4	52.9	63.7	63.6	53.4	50.0	61.0	65.0	60.4	55.9	52.4	63.1	61.6	31.4	52.3	61.5
the reduction of	As likely	%	17.7	20.8	14.8	8.4	26.7	28.9	21.9	12.2	12.6	14.1	25.7	15.2	12.9	35.7	.0	6.2
greenhouse gases	Unsure	%	5.8	8.1	3.6	6.1	5.5	4.0	3.5	3.4	10.2	7.9	6.0	5.0	5.1	7.4	.0	10.3

Nanos conducted an RDD dual frame (land- and cell- lines) random telephone survey of 500 residents of Ontario, 18 years of age or older, between February 3rd and 7th, 2017. The margin of error for a random survey of 500 residents of Ontario is ±4.4 percentage points, 19 times out of 20.

www.nanosresearch.com