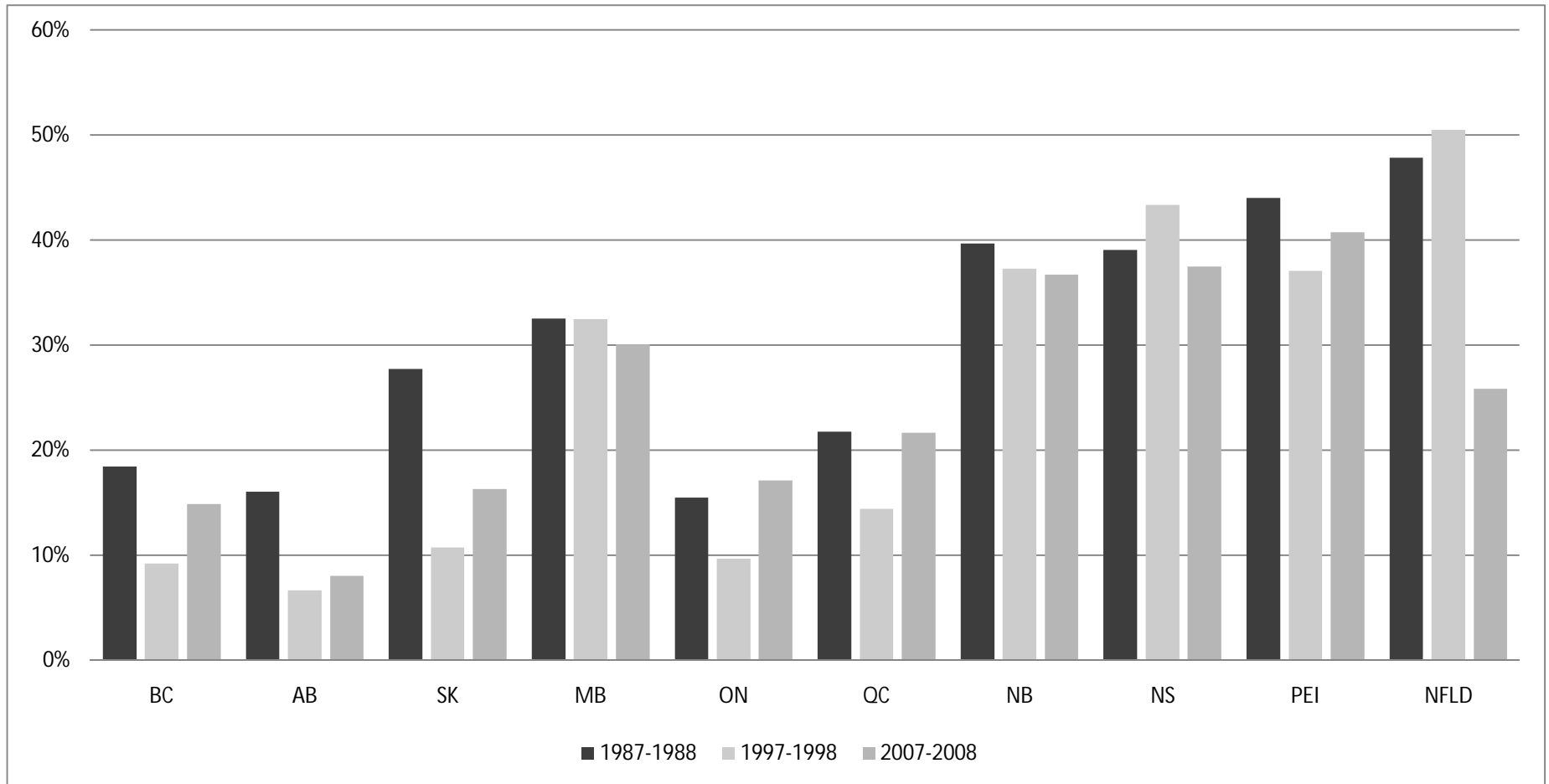


Federal Transfers to Provincial Governments by Province & Year (% of Government Revenues), 1986-1987 to 2007-2008



Year	BC	AB	SK	MB	ON	QC	NB	NS	PEI	NFLD	YK	NWT	NT	Average Provinces (Not including Territories)
1986-1987	20%	18%	28%	34%	17%	23%	40%	41%	47%	51%	65%	80%	-	32%
1987-1988	18%	16%	28%	33%	15%	22%	40%	39%	44%	48%	67%	84%	-	30%
1988-1989	17%	18%	29%	35%	14%	21%	39%	41%	45%	49%	63%	85%	-	31%
1989-1990	15%	15%	30%	36%	13%	22%	40%	41%	44%	49%	64%	83%	-	30%
1990-1991	15%	17%	32%	36%	13%	21%	40%	41%	44%	47%	69%	84%	-	31%
1991-1992	15%	16%	31%	37%	16%	20%	38%	41%	42%	46%	69%	81%	-	30%
1992-1993	15%	17%	30%	39%	18%	22%	43%	41%	43%	47%	75%	80%	-	31%
1993-1994	13%	14%	27%	33%	16%	22%	38%	39%	38%	46%	67%	82%	-	28%
1994-1995	12%	12%	25%	36%	17%	21%	38%	43%	41%	48%	64%	82%	-	29%
1995-1996	12%	11%	19%	33%	16%	21%	37%	43%	39%	43%	66%	81%	-	27%
1996-1997	10%	8%	14%	29%	12%	18%	34%	39%	36%	43%	65%	81%	-	24%
1997-1998	9%	7%	11%	32%	10%	14%	37%	43%	37%	50%	66%	81%	-	25%
1998-1999	10%	8%	17%	26%	8%	18%	48%	43%	41%	48%	76%	83%	-	27%
1999-2000	12%	8%	21%	32%	9%	14%	38%	41%	39%	43%	68%	80%	91%	26%
2000-2001	11%	7%	13%	31%	9%	16%	37%	40%	40%	45%	70%	70%	90%	25%
2001-2002	12%	10%	20%	32%	12%	19%	39%	39%	41%	42%	74%	33%	91%	27%
2002-2003	14%	9%	12%	31%	13%	18%	37%	36%	35%	40%	73%	48%	88%	25%
2003-2004	12%	11%	16%	31%	14%	18%	35%	35%	38%	37%	76%	105%	89%	25%
2004-2005	16%	11%	21%	31%	15%	17%	39%	37%	40%	35%	77%	80%	91%	26%
2005-2006	16%	10%	15%	29%	16%	18%	38%	36%	38%	35%	79%	80%	91%	25%
2006-2007	17%	8%	16%	30%	16%	18%	37%	36%	39%	33%	72%	73%	93%	25%
2007-2008	15%	8%	16%	30%	17%	22%	37%	37%	41%	26%	72%	73%	91%	25%

Sources:

- Federal Transfers to Provincial Governments by Year (% of Government Revenues), 1986-1987 to 2007-2008
  - Federal Public Accounts, Fiscal Reference Tables

Notes:

- 'Federal Transfers' include 'Health Transfers', 'Social Transfers' and 'Equalization Payments'